



Republic of the Philippines

DEPARTMENT OF SCIENCE AND TECHNOLOGY

Philippine Atmospheric, Geophysical and Astronomical Services

Administration (PAGASA)

22 November 2022

SUPPLEMENTAL BID BULLETIN

ADDENDUM NO. 2022-034-01

Subject: Printing and Delivery of IEC Materials (18 kinds of Brochures and 6 kinds of Posters)

This Bid Bulletin is being issued to all prospective bidders to clarify, amend and/or modify certain provisions in the Bidding Documents and to answer clarificatory questions during the pre-bid conference by prospective bidders, to wit:

Attached herewith are Annexes for:

1. Detailed Specifications	Please see attached Annexes "A" to "L"
2. Sample print-outs of brochures and posters	Bidders shall submit as part of their bid, at least 3 samples print out of brochures + 1 print out of poster in full colors in order for the BAC to fully evaluate and compare the quality of the print outs and materials to be used, in accordance with the given specifications.
3. Availability of Lay-outs	Interested bidders can avail copy of the lay outs to Ms. Ivy Ramirez. Contact Details: 09336465785 zerimarisivy@gmail.com

This shall form an integral part of the Bid Documents.

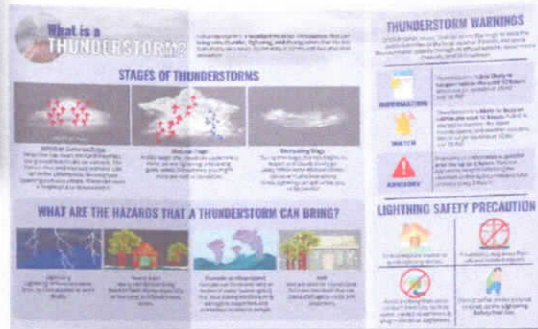
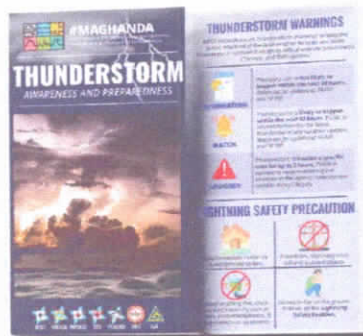
For guidance and information of all participating bidders.

Sgd
BONIFACIO G. PAJUELAS, Ph.D.
Chairperson, PAGASA-BAC

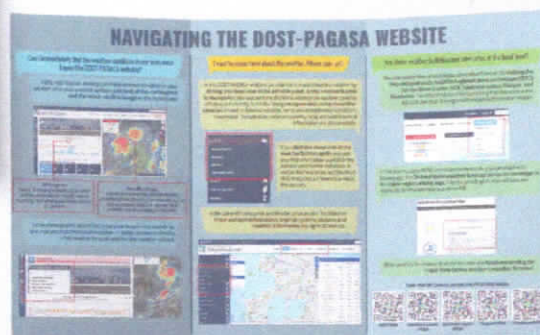
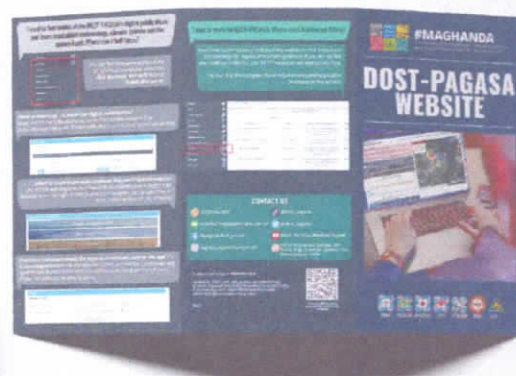
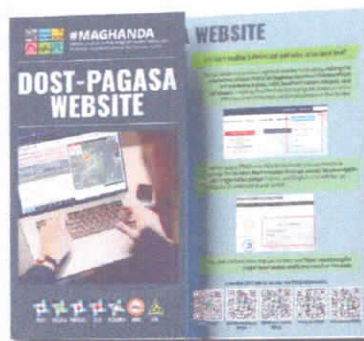
"tracking the sky...helping the country"

Science Garden Compound, BIR Road, Brgy. Central, Quezon City,
Metro Manila, Philippines 1100
Postal Address: P.O. Box 3278 Manila

Tel. Nos. (632) 929 48 65; (632) 434 90 40
Fax: (632) 929 48 65
Website: <http://bagong.pagasa.dost.gov.ph>



File: Thunderstorm
 Size: 8.5x14"
 Number of copies: 7,500pcs
 Material: C2S 80lbs, UV laminated 2 sides
 Color: Full color with color separation
 Print: Back to back
 Fold: 3 panel, 2 folds



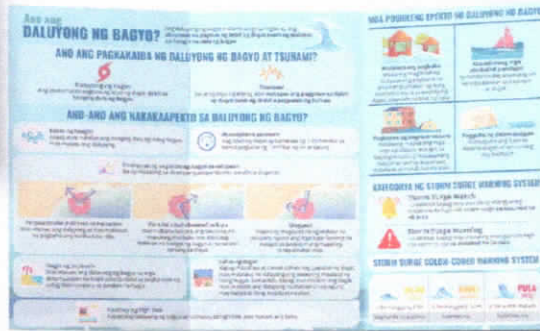
File: PAGASA Website
 Size: 8.5x14"
 Number of copies: 7,500pcs
 Material: C2S 80lbs, UV laminated 2 sides
 Color: Full color with color separation
 Print: Back to back
 Fold: 3 panel, 2 folds



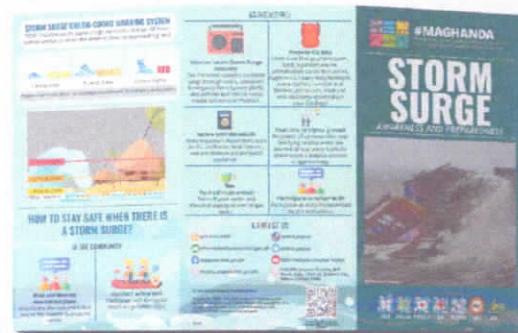
File: La Niña
 Size: 8.5x14"
 Number of copies: 7,500pcs
 Material: C2S 80lbs, UV laminated 2 sides
 Color: Full color with color separation
 Print: Back to back
 Fold: 3 panel, 2 folds



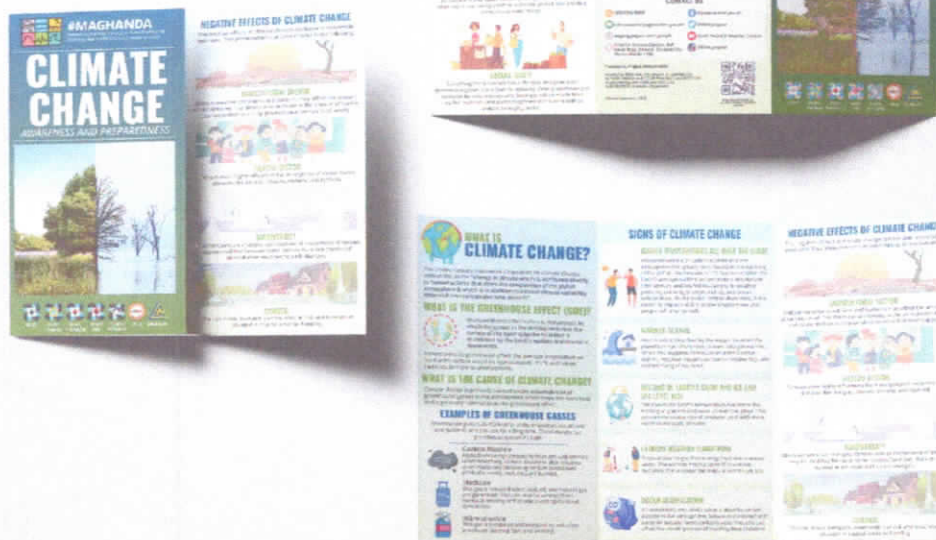
File: El Niño
 Size: 8.5x14"
 Number of copies: 7,500pcs
 Material: C2S 80lbs, UV laminated 2 sides
 Color: Full color with color separation
 Print: Back to back
 Fold: 3 panel, 2 folds



File: Daluyong
 Size: 8.5x14"
 Number of copies: 7,500pcs
 Material: C2S 80lbs, UV laminated 2 sides
 Color: Full color with color separation
 Print: Back to back
 Fold: 3 panel, 2 folds



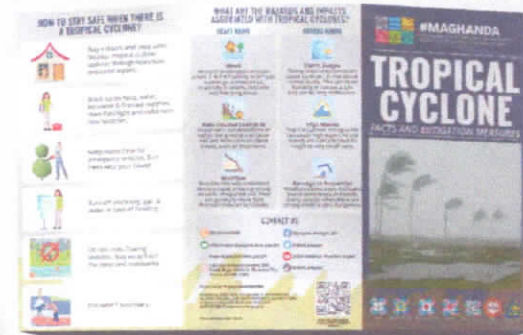
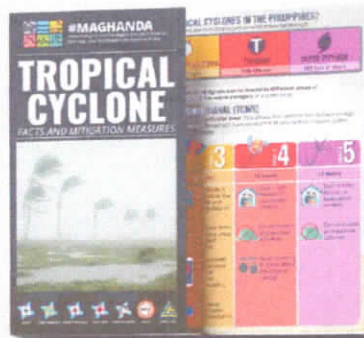
File: Storm Surge
 Size: 8.5x14"
 Number of copies: 7,500pcs
 Material: C2S 80lbs, UV laminated 2 sides
 Color: Full color with color separation
 Print: Back to back
 Fold: 3 panel, 2 folds



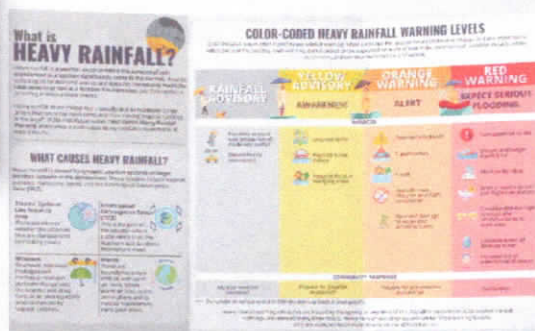
File: Climate Change
 Size: 8.5x14"
 Number of copies: 7,500pcs
 Material: C2S 80lbs, UV laminated 2 sides
 Color: Full color with color separation
 Print: Back to back
 Fold: 3 panel, 2 folds



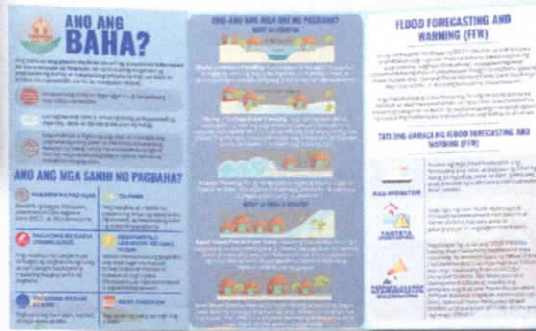
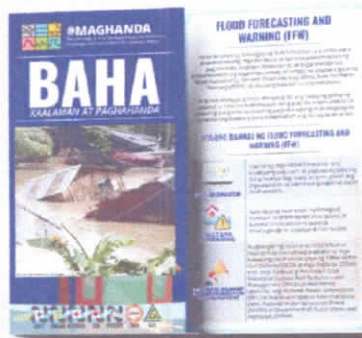
File: Climate Change PH
 Size: 8.5x14"
 Number of copies: 7,500pcs
 Material: C2S 80lbs, UV laminated 2 sides
 Color: Full color with color separation
 Print: Back to back
 Fold: 3 panel, 2 folds



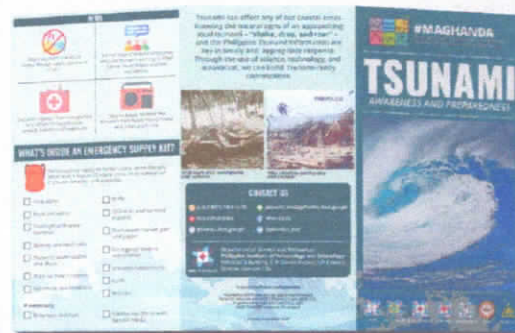
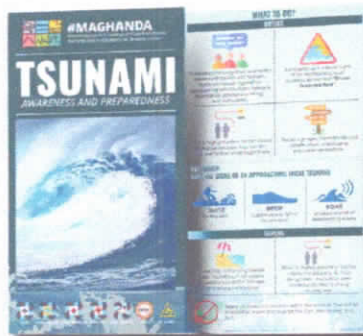
File: Tropical Cyclone
 Size: 8.5x14"
 Number of copies: 7,500pcs
 Material: C2S 80lbs, UV laminated 2 sides
 Color: Full color with color separation
 Print: Back to back
 Fold: 3 panel, 2 folds



File: Heavy Rainfall
 Size: 8.5x14"
 Number of copies: 7,500pcs
 Material: C2S 80lbs, UV laminated 2 sides
 Color: Full color with color separation
 Print: Back to back
 Fold: 3 panel, 2 folds



File: Baha
 Size: 8.5x14"
 Number of copies: 7,500pcs
 Material: C2S 80lbs, UV laminated 2 sides
 Color: Full color with color separation
 Print: Back to back
 Fold: 3 panel, 2 folds



File: Tsunami
 Size: 8.5x14"
 Number of copies: 10,000pcs
 Material: C2S 80lbs, UV laminated 2 sides
 Color: Full color with color separation
 Print: Back to back
 Fold: 3 panel, 2 folds



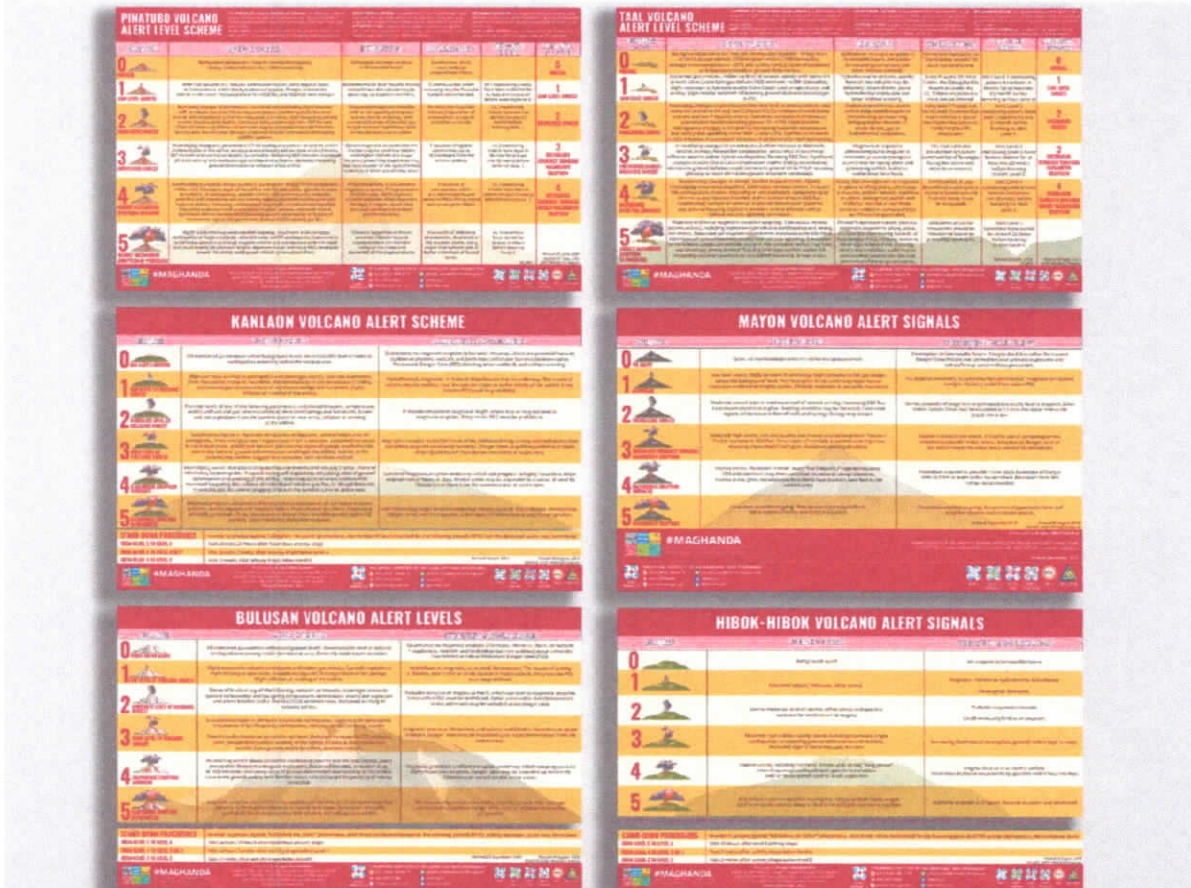
File: Ashfall (4 sub-types)
 Size: 8.5x14"
 Number of copies: 10,000pcs
 Material: C2S 80lbs, UV laminated 2 sides
 Color: Full color with color separation
 Print: Back to back
 Fold: 3 panel, 2 folds



File: Earthquake (2 sub-types)
 Size: 8.5x14"
 Number of copies: 10,000pcs
 Material: C2S 80lbs, UV laminated 2 sides
 Color: Full color with color separation
 Print: Back to back
 Fold: 3 panel, 2 folds



File: PTI
 Size: 8.5x14"
 Number of copies: 10,000pcs
 Material: C2S 80lbs, UV laminated 2 sides
 Color: Full color with color separation
 Print: Back to back
 Fold: No folds



File: Volcano Alert Level (6 sub-types)
 Size: 8.5x14"
 Number of copies: 5,000pcs
 Material: C2S 80lbs, UV laminated 1 side
 Color: Full color with color separation
 Print: Front only
 Fold: No folds



File: PEIS
 Size: 3.5x14"
 Number of copies: 10,000pcs
 Material: C2S 80lbs, UV laminated 2 sides
 Color: Full color with color separation
 Print: Back to back
 Fold: 5 folds

PHILIPPINE TSUNAMI INFORMATION

TSUNAMI INFORMATION	THREAT TO THE PHILIPPINES	RECOMMENDED ACTION FOR AFFECTED PLACES
<p>TSUNAMI</p> <p>A large earthquake is generated but a few (3) there is an tsunami generated by this event or (2) a tsunami has generated in it with not reach the Philippines.</p> <p>Information regarding this event is available through the Department of Science and Technology (DOST) and the Philippine Coast Guard (PCG).</p>	<p>TSUNAMI will not reach the Philippines.</p> <p>There is no danger to the Philippines.</p> <p>There is no danger to the Philippines.</p>	<p>No evacuation needed.</p> <p>The authority is based on information purposes only.</p> <p>Information regarding this event is available through the Department of Science and Technology (DOST) and the Philippine Coast Guard (PCG).</p>
<p>SEA LEVEL RAISE</p> <p>Minor sea level rise</p> <p>Minor sea level rise</p>	<p>Minor sea level rise</p> <p>Minor sea level rise</p>	<p>People are advised to stay away from the beach and not to go to the coast.</p> <p>People are advised to stay away from the beach and not to go to the coast.</p>
<p>MINOR SEA LEVEL RISE</p> <p>Minor sea level rise</p>	<p>Minor sea level rise</p> <p>Minor sea level rise</p>	<p>People are advised to stay away from the beach and not to go to the coast.</p> <p>People are advised to stay away from the beach and not to go to the coast.</p>
<p>TSUNAMI WARNING</p> <p>Tsunami warning</p>	<p>Tsunami warning</p> <p>Tsunami warning</p>	<p>People are advised to stay away from the beach and not to go to the coast.</p> <p>People are advised to stay away from the beach and not to go to the coast.</p>

File: PTI
 Size: 24x36"
 Number of copies: 7,500pcs
 Material: C2S 220lbs, UV laminated one side
 Color: Full color with color separation
 Print: One side

TROPICAL CYCLONE

WHAT IS A TROPICAL CYCLONE?

PHILIPPINE TROPICAL CYCLONE CATEGORIES

Category	1	2	3	4	5
Wind Speed	30-59 km/h	60-89 km/h	90-119 km/h	120-159 km/h	160-220 km/h
Damage	Minor damage to buildings and structures.	Minor to moderate damage to buildings and structures.	Moderate to major damage to buildings and structures.	Major damage to buildings and structures.	Extensive damage to buildings and structures.
Preparation	Check the safety of your home and vehicles.	Check the safety of your home and vehicles.	Check the safety of your home and vehicles.	Check the safety of your home and vehicles.	Check the safety of your home and vehicles.

HOW TO STAY SAFE WHEN UNDER A TROPICAL CYCLONE?

- Stay indoors and avoid walking through floodwaters.
- Stay away from windows, doors, and roofs.
- Stay away from trees and power lines.
- Stay away from the beach and the coast.
- Stay away from the coast.

File: Tropical Cyclone
 Size: 24x36"
 Number of copies: 7,500pcs
 Material: C2S 220lbs, UV laminated one side
 Color: Full color with color separation
 Print: One side



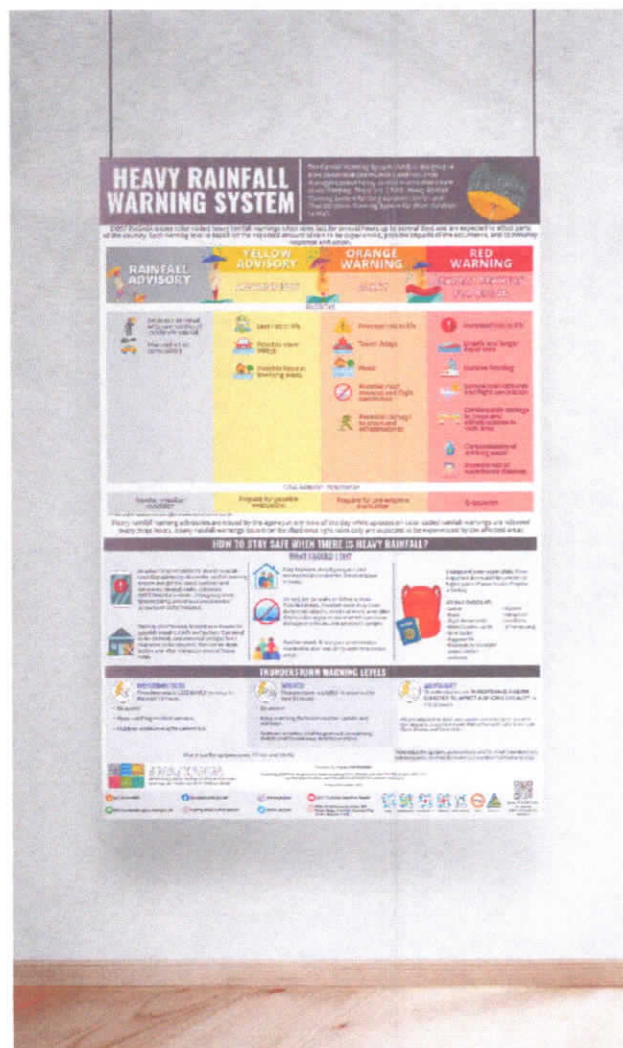
File: La Niña
 Size: 24x36"
 Number of copies: 7,500pcs
 Material: C2S 220lbs, UV laminated one side
 Color: Full color with color separation
 Print: One side



File: El Niño
 Size: 24x36"
 Number of copies: 7,500pcs
 Material: C2S 220lbs, UV laminated one side
 Color: Full color with color separation
 Print: One side



File: Flood
 Size: 24x36"
 Number of copies: 7,500pcs
 Material: C2S 220lbs, UV laminated one side
 Color: Full color with color separation
 Print: One side



File: Heavy Rainfall Warning System
 Size: 24x36"
 Number of copies: 7,500pcs
 Material: C2S 220lbs, UV laminated one side
 Color: Full color with color separation
 Print: One side